

Features

- Input voltage: 220–240 V AC, 50/60 Hz
- Input voltage range: 198–264 V AC
- Electrical protection class 1
- IP: 65
- IK: 11+ / 80 joules
- Incandescent wire test 850 °C / 30 s
- Rated ambient operating temperature: 25 °C
- Operating temperature range : -20 °C ... +35 °C
- VK45 surface mounted, VK46 ceiling mounted, VK46 flush mounted
- CRI: 80
- SDCM (Standard Deviation Colour Matching): 3
- Photobiological hazard: RG0
- Energy class C light source
- Lumen maintenance: L80B10 / over 72,000 hours
- Lumen maintenance: L90B50 / 52,000 hours
- Number of detector switching cycles: 1,000,000 at maximum load.
- Repairable luminaire. Spare parts available on demand
- 5-year guarantee, details of conditions available on securlite.com

Applications

- Technical luminaire in EZ steel version for indoor or outdoor environment
- Stainless version: 316L brushed stainless for severe corrosive environments (seaside), indoor and outdoor
- Stainless version: 314L painted stainless for indoor or outdoor environment
- Installation positions: refer to installation instructions

Materials

- Base: 1 mm thick zinc-plated steel, frame 2 mm thick ZP steel
- Stainless version: 316L brushed stainless body and frame
- Stainless version: 304L painted stainless body and frame
- Diffuser: opal polycarbonate
- RoHS: the products contain no prohibited substances as defined in the European Directive 2011/65/UE and amendments

Colours / Finish

- Standard colour: graphite grey RAL7016, abrasion-resistant polyester paint finish, withstands polluting chemical elements
- 316L brushed stainless
- 304L painted stainless: graphite grey RAL7016, abrasion-resistant polyester paint finish, withstands polluting chemical elements

Technical and dimensional data are given for information only and may be modified at any time without notice. Please enquire before ordering.

05/01/2024

Wiring

- Supply terminal block: automatic, dual-entry, for 3 × 1.5 mm² conductors
- 2 side cable entries for M20 cable gland (not supplied)

Fixings

- Diffuser: retained by M5 stainless 2-point tamper-proof screws with sealing washers

Facilities available

- Flat Duroflam® diffuser: add the suffix **9413** to the product code – example: 64xxxxxx **9413**
- Anti-graffiti protection: add the suffix **9601** to the product code – example: 64xxxxxx **9601**
- Stainless crosspoint screws (VK54): add the suffix **9702** to the product code – example: 64xxxxxx **9702**

Tools

(to be ordered separately)

- M5 bit for 2-point tamper-proof screws – code: **98000003**
- M5 bit-holder screwdriver – code: **98000 0005**

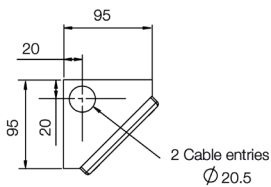
Approvals

Certificates available:

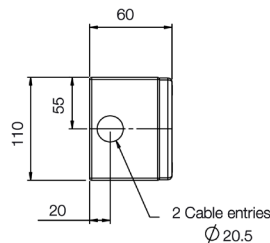
- CE certificate (as per EN60598-1 / 2-1 / 2-2)
- Incandescent Wire Test certificate (depending on product)

Dimensions

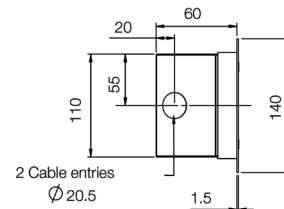
TITAN COMPACT Angle



TITAN COMPACT Wall mounted

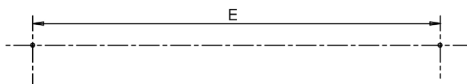


TITAN COMPACT E
(Recessed version)

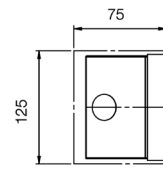


Fixing (E) for wall mounting and recessed version :

- 260 mm (for version 1 module LLC)
- 440 mm (for version 2 modules LLC)
- 600 mm (for version 3 modules LLC)
- 700 mm (for version 4 modules LLC)



Recess dimensions (TITAN COMPACT E - Recessed version):



LENGTH:

- 390 mm (for version 1 module LLC)
- 675 mm (for version 2 modules LLC)
- 960 mm (for version 3 modules LLC)
- 1245 mm (for version 4 modules LLC)

Fixing (E) for angle version :

- 120 mm (for version 1 module LLC)
- 220 mm (for version 2 modules LLC)
- 350 mm (for version 3 modules LLC)
- 350 mm (for version 4 modules LLC)



Technical and dimensional data are given for information only and may be modified at any time without notice. Please enquire before ordering.

05/01/2024

Technical data and order codes

TITAN COMPACT (surface mounted)								
Designation	CCT (K)	Power (W)	Power in standby (W)	Power factor	Luminaire light output (lm)	Luminaire efficacy (lm)	Frame length (mm)	Code EZ steel
1 x 1300lm	3000K	9,6	-	0,92	750	68	375	64011300
1 x 1300lm	4000K	9,6	-	0,92	800	73	375	64011400
2 x 1300lm	3000K	21	-	0,92	1750	83	660	64021300
2 x 1300lm	4000K	21	-	0,92	1800	86	660	64021400
3 x 1300lm	3000K	31	-	0,91	2650	85	945	64031300
3 x 1300lm	4000K	31	-	0,91	2750	89	945	64031400
4 x 1300lm	3000K	43	-	0,96	3500	81	1230	64041300
4 x 1300lm	4000K	43	-	0,96	3650	85	1230	64041400

TITAN COMPACT ANGLE								
Designation	CCT (K)	Power (W)	Power in standby (W)	Power factor	Luminaire light output (lm)	Luminaire efficacy (lm)	Frame length (mm)	Code EZ steel
1 x 1300lm	3000K	9,6	-	0,92	750	68	375	64111300
1 x 1300lm	4000K	9,6	-	0,92	800	73	375	64111400
2 x 1300lm	3000K	21	-	0,92	1750	83	660	64121300
2 x 1300lm	4000K	21	-	0,92	1800	86	660	64121400
3 x 1300lm	3000K	31	-	0,91	2650	85	945	64131300
3 x 1300lm	4000K	31	-	0,91	2750	89	945	64131400
4 x 1300lm	3000K	43	-	0,96	3500	81	1230	64141300
4 x 1300lm	4000K	43	-	0,96	3650	85	1230	64141400

TITAN COMPACT E stainless steel									
Designation	CCT (K)	Power (W)	Power in standby (W)	Power factor	Luminaire light output (lm)	Luminaire efficacy (lm)	Frame length (mm)	Code 316L	Code 304L
1 x 1300lm	3000K	9,6	-	0,92	750	68	375	64218300	64251300
1 x 1300lm	4000K	9,6	-	0,92	800	73	375	64218400	64251400
2 x 1300lm	3000K	21	-	0,92	1750	83	660	64228300	64261300
2 x 1300lm	4000K	21	-	0,92	1800	86	660	64228400	64261400
3 x 1300lm	3000K	31	-	0,91	2650	85	945	64238300	64271300
3 x 1300lm	4000K	31	-	0,91	2750	89	945	64238400	64271400
4 x 1300lm	3000K	43	-	0,96	3500	81	1230	64248300	64281300
4 x 1300lm	4000K	43	-	0,96	3650	85	1230	64248400	64281400

Operating instruction : www.securlite.com (NOT0715)

Technical and dimensional data are given for information only and may be modified at any time without notice. Please enquire before ordering.

05/01/2024

Technical data and order codes

TITAN COMPACT (surface mounted) DALI dimmable + switch dimming								
Technical specifications and conditions of use for dali : www.securlite.com (NOT0880)								
Designation	CCT (K)	Power (W)	Power in standby (W)	Power factor	Luminaire light output (lm)	Luminaire efficacy (lm)	Frame length (mm)	Code EZ steel
2 x 1300lm	3000K	21	0,10	0,94	1750	83	660	64021321
2 x 1300lm	4000K	21	0,10	0,94	1800	86	660	64021421
3 x 1300lm	3000K	31	0,10	0,97	2650	85	945	64031321
3 x 1300lm	4000K	31	0,10	0,97	2750	89	945	64031421
4 x 1300lm	3000K	42	0,16	0,96	3500	81	1230	64041321
4 x 1300lm	4000K	42	0,16	0,96	3650	85	1230	64041421

TITAN COMPACT ANGLE DALI dimmable + switch dimming								
Technical specifications and conditions of use for dali : www.securlite.com (NOT0880)								
Designation	CCT (K)	Power (W)	Power in standby (W)	Power factor	Luminaire light output (lm)	Luminaire efficacy (lm)	Frame length (mm)	Code EZ steel
2 x 1300lm	3000K	21	0,10	0,94	1750	83	660	64121321
2 x 1300lm	4000K	21	0,10	0,94	1800	86	660	64121421
3 x 1300lm	3000K	31	0,10	0,97	2650	85	945	64131321
3 x 1300lm	4000K	31	0,10	0,97	2750	89	945	64131421
4 x 1300lm	3000K	42	0,16	0,96	3500	81	1230	64141321
4 x 1300lm	4000K	42	0,16	0,96	3650	85	1230	64141421

TITAN COMPACT E stainless steel DALI dimmable + switch dimming									
Technical specifications and conditions of use for dali : www.securlite.com (NOT0880)									
Designation	CCT (K)	Power (W)	Power in standby (W)	Power factor	Luminaire light output (lm)	Luminaire efficacy (lm)	Frame length (mm)	Code 316L	Code 304L
2 x 1300lm	3000K	21	0,10	0,94	1750	83	660	64228321	64261321
2 x 1300lm	4000K	21	0,10	0,94	1800	86	660	64228421	64261421
3 x 1300lm	3000K	31	0,10	0,97	2650	85	945	64238321	64271321
3 x 1300lm	4000K	31	0,10	0,97	2750	89	945	64238421	64271421
4 x 1300lm	3000K	42	0,16	0,96	3500	81	1230	64248321	64281321
4 x 1300lm	4000K	42	0,16	0,96	3650	85	1230	64248421	64281421

Operating instruction : www.securlite.com (NOT0715)

Technical and dimensional data are given for information only and may be modified at any time without notice. Please enquire before ordering.

05/01/2024